

# TEST REPORT

**Report No:** ST20260112005

**Sample Name:** Wire Harness/Cable Assembly

**Authorized By:** Access Star Co., Ltd.

**Test Type:** Commissioned Test

**Report Date:** January 22, 2026

Testing & Compliance Solutions

Approved by:

*Hedy*



STAR-TECH (Shenzhen) Co., Ltd.

Address: No.1001,Building 10,Hongtianmao Industrial Park,  
Gongming Street,Guangming District,Shenzhen,Guangdong  
Tel:0755-88658563 Fax:0086-755-88658563  
Email:zhouxue@startechsz.com Website:szstartech.com



Scan the QR  
code to follow



# Test Report

**Client Name** : Access Star Co., Ltd.

**Client Address** : NO.43,Hexi Rd, Hexi Industrial Zone, Jinxia,Changan Town, Dongguan ,China 523853

**Sample Name** : Wire Harness/Cable Assembly

**Brand** : /

**Specification/Model** : AS-001/AS-002

**Sample Number** : ST0112005

**Sample Received Date** : January 12, 2026

**Test Period** : January 12, 2026~January 22, 2026

.....  
**Summary of test results:**

**TEST REQUEST**

**CONCLUSION**

According to the client requirements, the Restriction of the Use of Certain Hazardous Substances in accordance with Directive 2011/65/EU(RoHS) and its amendment Directive (EU)2015/863.

- |  |             |
|--|-------------|
| To determine Lead (Pb), Cadmium(Cd), Mercury(Hg), Hexavalent   | <b>PASS</b> |
| <b>(1) Chromium(Cr(VI) , Polybrominated Biphenyls (PBBs) and Polybrominated DiphenylEthers (PBDEs) content by screening test and chemical test</b> |             |
| <b>(2) To determine Phthalates (DBP, BBP, DEHP, DIBP) content by chemical test</b>   | <b>PASS</b> |
- .....

Prepared by: Ma Haiyu                      Checked by: zhou Jie

## Sample Photos



Figure 1. Sample photo

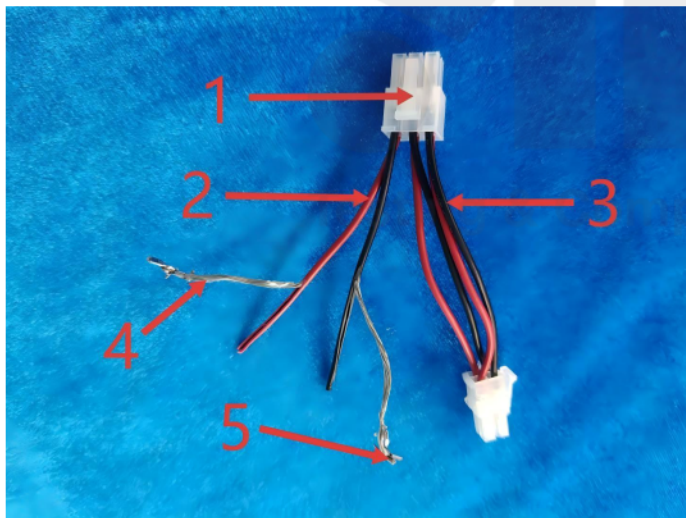
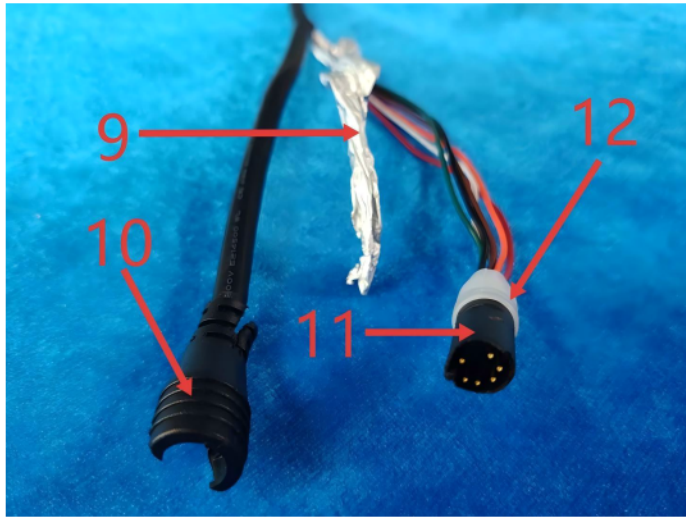


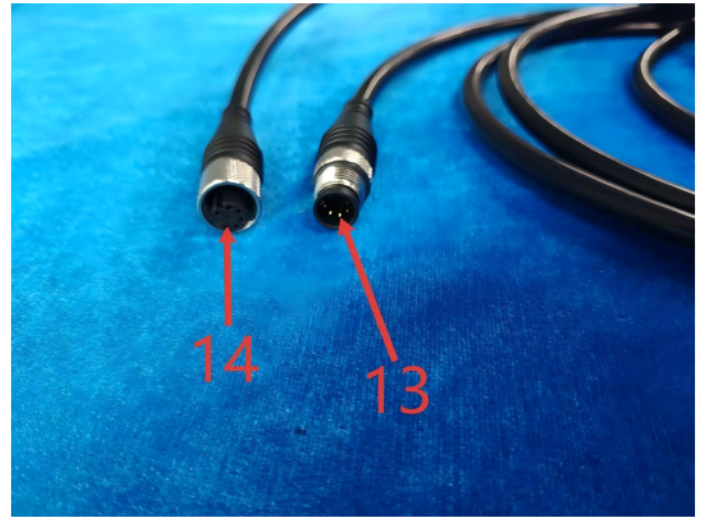
Figure 2. Disassembling photo No.(1-5)



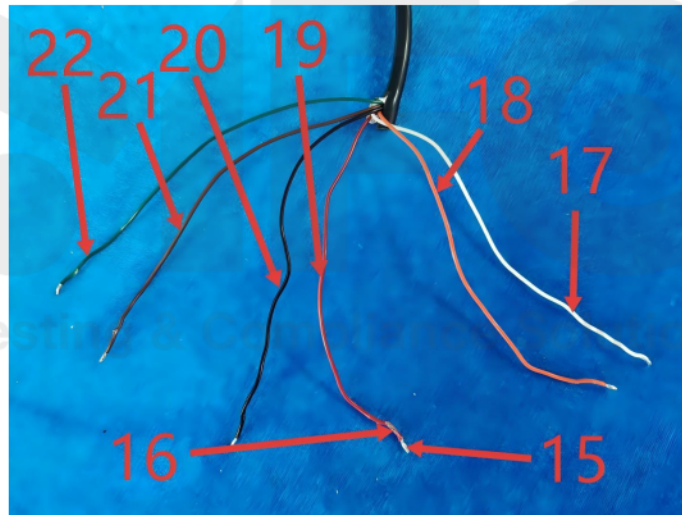
Figure 2.1 Disassembling photo No.(6-8)



**Figure 2.2. Disassembling photo No.(9-12)**



**Figure 2.3 Disassembling photo No.(13-14)**



**Figure 2.4. Disassembling photo No.(15-22)**

## 1. Test Items

### Test items

RoHS 10 items (Pb, Cd, Hg, Cr<sup>6+</sup>, PBBs, PBDEs, DIBP, DBP, BBP, DEHP)

## 2. Test Method & Equipment

### a. XRF Scan Test

Test method: IEC 62321-3-1:2013

Element Test	Polymer	Metal	Composite material
Pb	BL <sub>≤</sub> (700-3σ) < X < (1300+3σ) ≤OL	BL <sub>≤</sub> (700-3σ) < X < (1300+3σ) ≤OL	BL <sub>≤</sub> (300-3σ) < X < (1300+3σ) ≤OL
Cd	BL <sub>≤</sub> (70-3σ) < X < (130+3σ) ≤OL	BL <sub>≤</sub> (70-3σ) < X < (130+3σ) ≤OL	LOD < X < (130+3σ) ≤OL
Hg	BL <sub>≤</sub> (700-3σ) < X < (1300+3σ) ≤OL	BL <sub>≤</sub> (700-3σ) < X < (1300+3σ) ≤OL	BL <sub>≤</sub> (300-3σ) < X < (1300+3σ) ≤OL
Cr	BL <sub>≤</sub> (700-3σ) < X	BL <sub>≤</sub> (700-3σ) < X	BL <sub>≤</sub> (300-3σ) < X
Br	BL <sub>≤</sub> (300-3σ) < X	/	BL <sub>≤</sub> (230-3σ) < X

#### Explanation:

- 1, BL — Lower than XRF Scan Test
- 2, OL — Higher than XRF Scan Test, Further chemical tests are needed to confirm this
- 3, X — Samples within the XRF scan test value range require further chemical confirmation
- 4, 3σ — It shows the repeatability of the analytical instrument

### b. Chemical test

Test Items	Test Method	Test Equipment	MDL	Limit
Pb	IEC 62321-5:2013	ICP-OES	10mg/kg	1000 mg/kg
Cd	IEC 62321-5:2013	ICP-OES	10mg/kg	100 mg/kg
Hg	IEC 62321-4:2013/AMD 1:2017	ICP-OES	10mg/kg	1000 mg/kg
Cr <sup>6+</sup>	IEC 62321-7-1:2015	UV-Vis	0.10 μg/cm <sup>2</sup>	-
	IEC 62321-7-2:2017	UV-Vis	10 mg/kg	1000 mg/kg
PBBs	IEC 62321-6:2015	GC-MS	-	1000 mg/kg
PBDEs	IEC 62321-6:2015	GC-MS	-	1000 mg/kg

Test Items	Test Method	Test Equipment	MDL	Limit
DIBP	IEC 62321-8:2017	GC-MS	30 mg/kg	1000 mg/kg
DBP	IEC 62321-8:2017	GC-MS	30 mg/kg	1000 mg/kg
BBP	IEC 62321-8:2017	GC-MS	30 mg/kg	1000 mg/kg
DEHP	IEC 62321-8:2017	GC-MS	30 mg/kg	1000 mg/kg

### 3. Test Process

In appendix

### 4. Test Results

Sample description	Items	Unite	XRF Scan results	Chemical Result (mg/kg)	Result
1 Translucent plastic	Pb	mg/kg	BL	N.D.	PASS
	Cd	mg/kg	BL	N.D.	
	Hg	mg/kg	BL	N.D.	
	Cr <sup>6+</sup>	mg/kg	BL	N.D.	
	PBBs	mg/kg	BL	N.D.	
	PBDEs	mg/kg	BL	N.D.	
	DIBP	mg/kg	/	N.D.	
	DBP	mg/kg	/	N.D.	
	BBP	mg/kg	/	N.D.	
	DEHP	mg/kg	/	N.D.	
2 Red wire insulation	Pb	mg/kg	BL	N.D.	PASS
	Cd	mg/kg	BL	N.D.	
	Hg	mg/kg	BL	N.D.	
	Cr <sup>6+</sup>	mg/kg	BL	N.D.	
	PBBs	mg/kg	BL	N.D.	
	PBDEs	mg/kg	BL	N.D.	
	DIBP	mg/kg	/	N.D.	

Sample description	Items	Unite	XRF Scan results	Chemical Result (mg/kg)	Result
	DBP	mg/kg	/	N.D.	
	BBP	mg/kg	/	N.D.	
	DEHP	mg/kg	/	N.D.	
3 Black wire insulation	Pb	mg/kg	BL	N.D.	PASS
	Cd	mg/kg	BL	N.D.	
	Hg	mg/kg	BL	N.D.	
	Cr <sup>6+</sup>	mg/kg	BL	N.D.	
	PBBs	mg/kg	BL	N.D.	
	PBDEs	mg/kg	BL	N.D.	
	DIBP	mg/kg	/	N.D.	
	DBP	mg/kg	/	N.D.	
	BBP	mg/kg	/	N.D.	
	DEHP	mg/kg	/	N.D.	
4 Silvery metal	Pb	mg/kg	BL	N.D.	PASS
	Cd	mg/kg	BL	N.D.	
	Hg	mg/kg	BL	N.D.	
	Cr <sup>6+</sup>	μg/cm <sup>2</sup>	BL	N.D.	
5 Silvery metal	Pb	mg/kg	BL	N.D.	PASS
	Cd	mg/kg	BL	N.D.	
	Hg	mg/kg	BL	N.D.	
	Cr <sup>6+</sup>	μg/cm <sup>2</sup>	BL	N.D.	
6 Black rubber	Pb	mg/kg	BL	N.D.	PASS
	Cd	mg/kg	BL	N.D.	
	Hg	mg/kg	BL	N.D.	
	Cr <sup>6+</sup>	mg/kg	BL	N.D.	
	PBBs	mg/kg	BL	N.D.	
	PBDEs	mg/kg	BL	N.D.	

Sample description	Items	Unite	XRF Scan results	Chemical Result (mg/kg)	Result
	DIBP	mg/kg	/	N.D.	
	DBP	mg/kg	/	N.D.	
	BBP	mg/kg	/	N.D.	
	DEHP	mg/kg	/	N.D.	
7 Silvery metal	Pb	mg/kg	OL	25963*	PASS
	Cd	mg/kg	BL	N.D.	
	Hg	mg/kg	BL	N.D.	
	Cr <sup>6+</sup>	μg/cm <sup>2</sup>	BL	N.D.	
8 Black wire insulation	Pb	mg/kg	BL	N.D.	PASS
	Cd	mg/kg	BL	N.D.	
	Hg	mg/kg	BL	N.D.	
	Cr <sup>6+</sup>	mg/kg	BL	N.D.	
	PBBs	mg/kg	BL	N.D.	
	PBDEs	mg/kg	BL	N.D.	
	DIBP	mg/kg	/	N.D.	
	DBP	mg/kg	/	N.D.	
	BBP	mg/kg	/	N.D.	
	DEHP	mg/kg	/	N.D.	
9 Silvery foil	Pb	mg/kg	BL	N.D.	PASS
	Cd	mg/kg	BL	N.D.	
	Hg	mg/kg	BL	N.D.	
	Cr <sup>6+</sup>	μg/cm <sup>2</sup>	BL	N.D.	
10 Black wire insulation	Pb	mg/kg	BL	N.D.	PASS
	Cd	mg/kg	BL	N.D.	
	Hg	mg/kg	BL	N.D.	
	Cr <sup>6+</sup>	mg/kg	BL	N.D.	
	PBBs	mg/kg	BL	N.D.	

Sample description	Items	Unite	XRF Scan results	Chemical Result (mg/kg)	Result
	PBDEs	mg/kg	BL	N.D.	
	DIBP	mg/kg	/	N.D.	
	DBP	mg/kg	/	N.D.	
	BBP	mg/kg	/	N.D.	
	DEHP	mg/kg	/	N.D.	
11 Black plastic	Pb	mg/kg	BL	N.D.	PASS
	Cd	mg/kg	BL	N.D.	
	Hg	mg/kg	BL	N.D.	
	Cr <sup>6+</sup>	mg/kg	BL	N.D.	
	PBBs	mg/kg	X	N.D.	
	PBDEs	mg/kg	X	N.D.	
	DIBP	mg/kg	/	N.D.	
	DBP	mg/kg	/	N.D.	
	BBP	mg/kg	/	N.D.	
	DEHP	mg/kg	/	N.D.	
12 Translucent plastic	Pb	mg/kg	BL	N.D.	PASS
	Cd	mg/kg	BL	N.D.	
	Hg	mg/kg	BL	N.D.	
	Cr <sup>6+</sup>	mg/kg	BL	N.D.	
	PBBs	mg/kg	BL	N.D.	
	PBDEs	mg/kg	BL	N.D.	
	DIBP	mg/kg	/	N.D.	
	DBP	mg/kg	/	N.D.	
	BBP	mg/kg	/	N.D.	
	DEHP	mg/kg	/	N.D.	
13 Golden metal	Pb	mg/kg	OL	28668*	PASS
	Cd	mg/kg	BL	N.D.	

Sample description	Items	Unite	XRF Scan results	Chemical Result (mg/kg)	Result
	Hg	mg/kg	BL	N.D.	
	Cr <sup>6+</sup>	µg/cm <sup>2</sup>	BL	N.D.	
14 Gold metal	Pb	mg/kg	OL	33591*	PASS
	Cd	mg/kg	BL	N.D.	
	Hg	mg/kg	BL	N.D.	
	Cr <sup>6+</sup>	µg/cm <sup>2</sup>	BL	N.D.	
15 Silvery solder	Pb	mg/kg	BL	N.D.	PASS
	Cd	mg/kg	BL	N.D.	
	Hg	mg/kg	BL	N.D.	
	Cr <sup>6+</sup>	µg/cm <sup>2</sup>	BL	N.D.	
16 Silvery metal	Pb	mg/kg	BL	N.D.	PASS
	Cd	mg/kg	BL	N.D.	
	Hg	mg/kg	BL	N.D.	
	Cr <sup>6+</sup>	µg/cm <sup>2</sup>	BL	N.D.	
17 White wire insulation	Pb	mg/kg	BL	N.D.	PASS
	Cd	mg/kg	BL	N.D.	
	Hg	mg/kg	BL	N.D.	
	Cr <sup>6+</sup>	mg/kg	BL	N.D.	
	PBBs	mg/kg	BL	N.D.	
	PBDEs	mg/kg	BL	N.D.	
	DIBP	mg/kg	/	N.D.	
	DBP	mg/kg	/	N.D.	
	BBP	mg/kg	/	N.D.	
	DEHP	mg/kg	/	N.D.	
18 Orange wire insulation	Pb	mg/kg	BL	N.D.	PASS
	Cd	mg/kg	BL	N.D.	
	Hg	mg/kg	BL	N.D.	

Sample description	Items	Unite	XRF Scan results	Chemical Result (mg/kg)	Result
	Cr <sup>6+</sup>	mg/kg	BL	N.D.	
	PBBs	mg/kg	BL	N.D.	
	PBDEs	mg/kg	BL	N.D.	
	DIBP	mg/kg	/	N.D.	
	DBP	mg/kg	/	N.D.	
	BBP	mg/kg	/	N.D.	
	DEHP	mg/kg	/	N.D.	
19 Red wire insulation	Pb	mg/kg	BL	N.D.	PASS
	Cd	mg/kg	BL	N.D.	
	Hg	mg/kg	BL	N.D.	
	Cr <sup>6+</sup>	mg/kg	BL	N.D.	
	PBBs	mg/kg	BL	N.D.	
	PBDEs	mg/kg	BL	N.D.	
	DIBP	mg/kg	/	N.D.	
	DBP	mg/kg	/	N.D.	
	BBP	mg/kg	/	N.D.	
	DEHP	mg/kg	/	N.D.	
20 Black wire insulation	Pb	mg/kg	BL	N.D.	PASS
	Cd	mg/kg	BL	N.D.	
	Hg	mg/kg	BL	N.D.	
	Cr <sup>6+</sup>	mg/kg	BL	N.D.	
	PBBs	mg/kg	BL	N.D.	
	PBDEs	mg/kg	BL	N.D.	
	DIBP	mg/kg	/	N.D.	
	DBP	mg/kg	/	N.D.	
	BBP	mg/kg	/	N.D.	
	DEHP	mg/kg	/	N.D.	

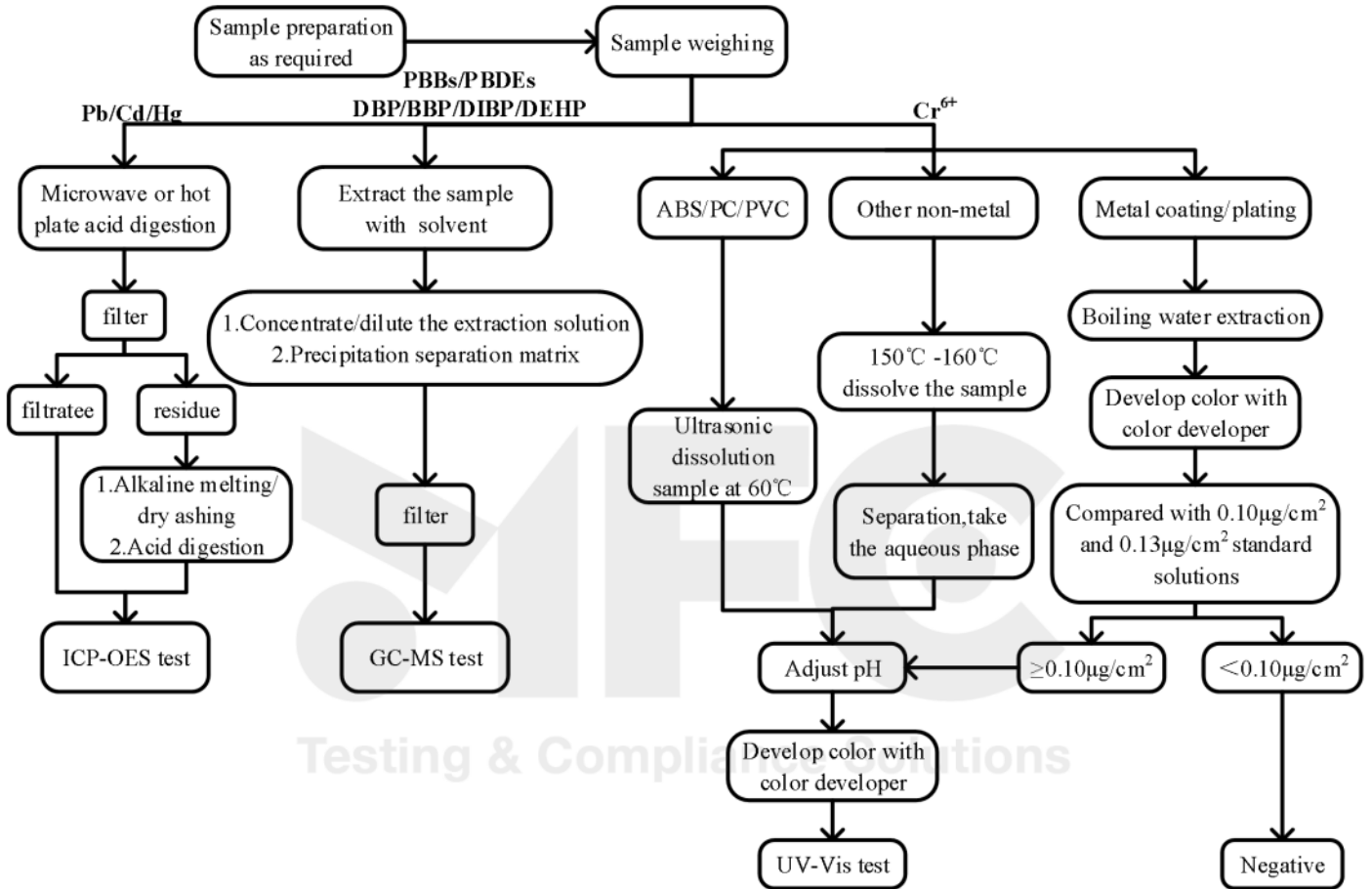
Sample description	Items	Unite	XRF Scan results	Chemical Result (mg/kg)	Result
21 Brown wire insulation	Pb	mg/kg	BL	N.D.	PASS
	Cd	mg/kg	BL	N.D.	
	Hg	mg/kg	BL	N.D.	
	Cr <sup>6+</sup>	mg/kg	BL	N.D.	
	PBBs	mg/kg	BL	N.D.	
	PBDEs	mg/kg	BL	N.D.	
	DIBP	mg/kg	/	N.D.	
	DBP	mg/kg	/	N.D.	
	BBP	mg/kg	/	N.D.	
	DEHP	mg/kg	/	N.D.	
22 Green wire insulation	Pb	mg/kg	BL	N.D.	PASS
	Cd	mg/kg	BL	N.D.	
	Hg	mg/kg	BL	N.D.	
	Cr <sup>6+</sup>	mg/kg	BL	N.D.	
	PBBs	mg/kg	BL	N.D.	
	PBDEs	mg/kg	BL	N.D.	
	DIBP	mg/kg	/	N.D.	
	DBP	mg/kg	/	N.D.	
	BBP	mg/kg	/	N.D.	
	DEHP	mg/kg	/	N.D.	

### Remark:

- 1) 1 mg/kg = 1ppm = 0.0001%
- 2) MDL = Method Detection limit
- 3) N.D. = Not detected (<MDL)
- 4) “/”= No detection required
- 5) Negative =Hexavalent chromium is not detected in incolourless and coloured corrosion-protected coatings on metal
- 6) \* = Pb The test result exceeds the limit, The material is copper alloy, Comply with the exemption provisions of Annex III of directive 2011/65/EU\*6 (c) Copper alloys contain not more than 4% lead by mass”required.

## Appendix

The sample is processed according to the following process



\* \* \* \* \* END \* \* \* \* \*

## Statement

- 1.The information listed on the first page of this test report, except the date of receipt, test date, test result and test conclusion, is provided by the client. The client shall be responsible for the representativeness of sample and authenticity of materials, for which STAR-TECH shall bear no responsibilities.
- 2.The test conclusion of this report are only applicable to the test samples submitted for inspection, and the samples submitted for inspection are only kept for 30 days, and the company does not bear other joint and several liabilities other than the test results.
- 3.The test report shall take effect only with the seal of the company, and this report shall not be deleted or modified.
- 4.This report shall not be reproduced in whole or in part without the written authorization of the Company.
- 5.Objection should be issued in 15 days upon receiving the report, overdue opinion is inadmissible.
- 6.If the report is not stamped with the accreditation recognized seal, it will only be used for scientific research, education, and internal quality control activities, and is not used for the purpose of issuing supporting data to the society.

MFC  
Testing & Compliance Solutions